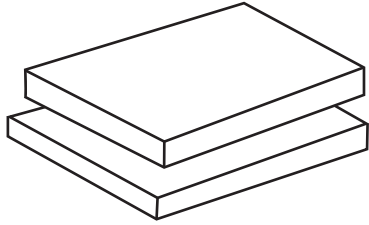




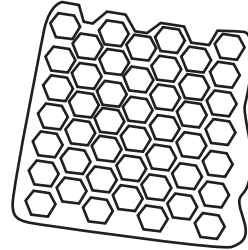
FIRST UP: CHOOSE A WAX



PARAFIN WAX

Petroleum

- Quick Burning
- Creates Smoke
- Easily Colored
- Easily Scented

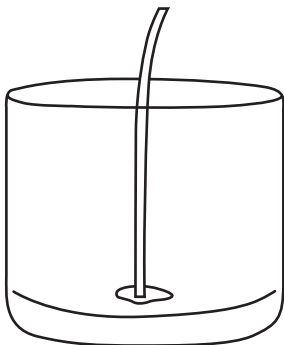


NATURAL WAX

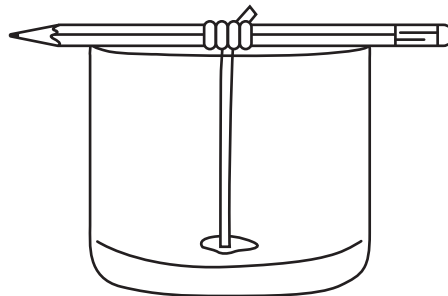
Beeswax, Palm Wax, and Soy

- Slow Burning
- Smokeless
- Not Easily Colored
- Not Easily Scented

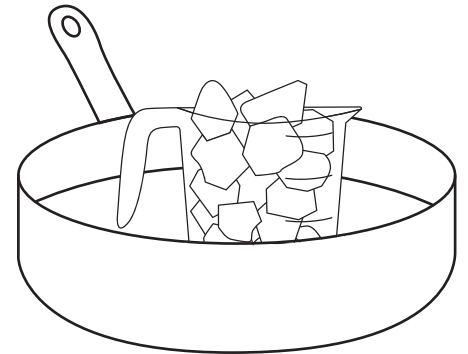
MAKING THE CANDLE



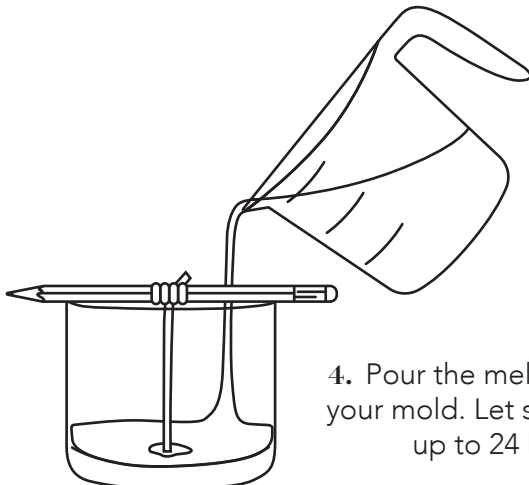
1. Using a drop of wax, adhere the wick to the bottom of your mold.



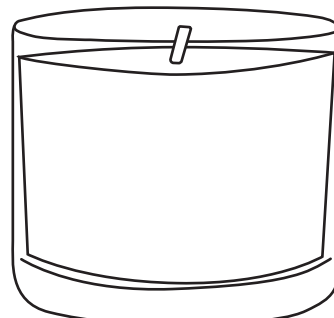
2. Loop then end of the wick around a pencil and rest it gently atop your mold.



3. Melt the solid wax by putting it in a glass measuring cup and placing it in a saucepan with 2 inches of boiling water.



4. Pour the melted wax into your mold. Let sit to cool for up to 24 hours.



5. Trim your wick and light your homemade candle!